

Protocol Parameter Area Overview



Michelle Cotton
Manager, IETF Relations - IANA
ICANN

August 2010

Presented to the Board IANA Committee

Overview

- What do we do?
- Who do we do the work for?
- How do we do it?
- Customer Satisfaction
- Trends
- Risks
- Projects
- Most Active Registries
- Links to Registries and Reporting Information

What do we do?

- Maintain registries
- Create New registries
- Document review
- Collaboration with IETF
 - writing/updating RFCs
 - participation at the IETF meeting

Who do we do the work for?

- Internet Community (IETF-IANA SLA)

- IESG
- Working Groups
- Authors of Internet-Drafts
- Internet users

(The protocol parameter registries are mirrored on the IETF web site)

- Joint oversight by DoC and IAB regarding the operator of the protocol parameters registries

How do we do it?

- What resources do we use?
 - 3 FTE
 - Consultants
- How does the work get done?
 - Ticketing system (RT)
 - Subversion
 - Follow instructions on how to process requests as defined in RFCs
 - Participation in teleconferences

Customer Satisfaction

How do we know our customers are happy?

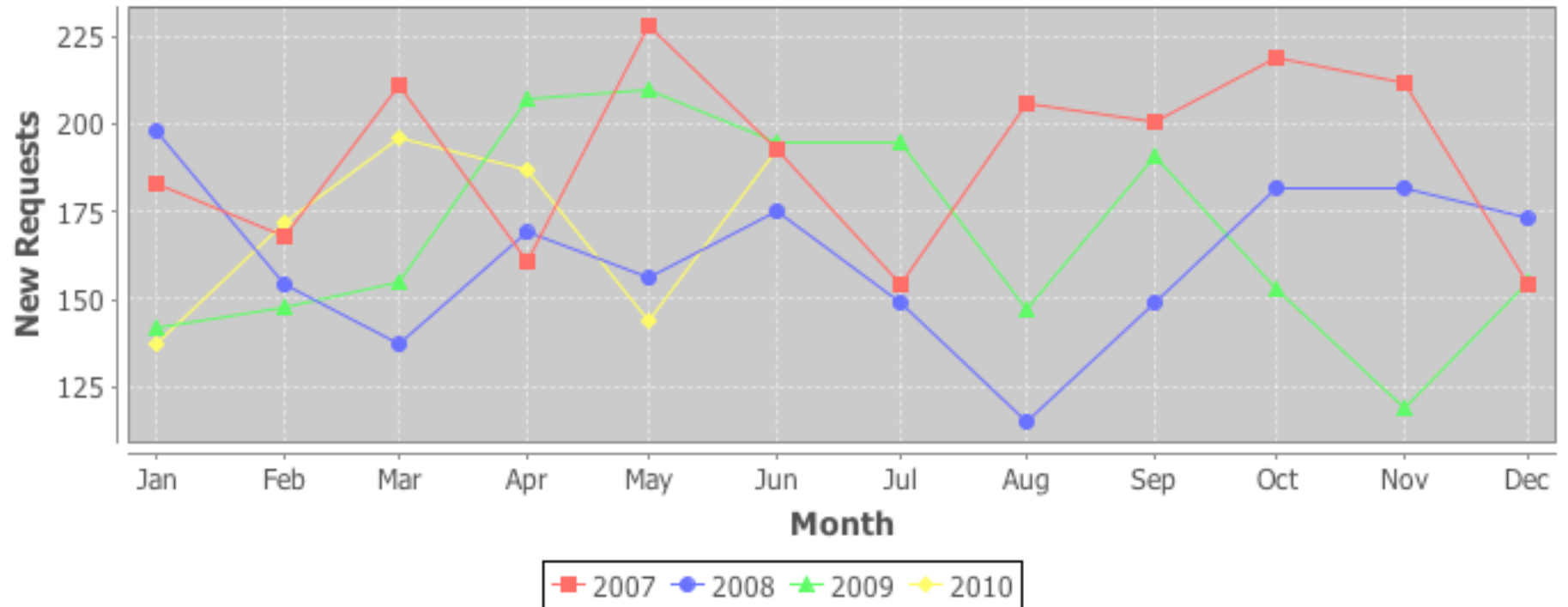
- Unstructured Feedback
 - Thank you emails after request processing
 - Feedback at the IETF meetings
 - Silence
- Structured Feedback
 - Currently no mechanism in place
 - We are considering how to gather more structured feedback and customer satisfaction as part of the BE activity

Trends

- Is our work increasing?
 - It appears fairly steady over the last 3 year period
 - 2009 was slightly lighter compared to the previous 2 years
 - These statistics are on a per request basis (does not account for single requests requesting large actions)
 - As the use of one registry decreases a new registry is created
- Future analysis of trends and workload
 - Use of the XML'ization of registries for new reporting

How many requests do we receive?

Cumulative New Requests Yearly Trend



Risk Situations

Low Probability Risks

- The IETF (through the I-D/RFC process) requests IANA to take on actions that will impact resources, response times and/or how we do our work
- A community member disagrees with a decision made on a parameter request
- Delays in processing due to legal requirements preventing a registration from being processed in a timely fashion.

Projects

- XML'ization of registries
 - 63% complete
 - Continue working on how to convert more complicated registry formats and structures and “fixing” registries before conversion
 - Announced to IETF Community that legacy txt files of registries converted between January 1, 2010 and June 31, 2010 are no longer published
- Reviewing the process of Expert Review during the I-D process
- Contact Information Format changes

Most Active Registries

- Private Enterprise Numbers (Avg. 190 per month)
- TRIP ITAD Numbers (Avg. 18 per month)
- Port Numbers (Avg. 18 per month)
- Language Subtags (Avg. 14 per month)

(statistics gathered from January-June 2010)

Where to find the registries

For a list of maintained IANA registries:

<http://www.iana.org/protocols/>

For the queue of approved documents awaiting IANA actions:

<http://www.iana.org/about/performance/ietf-draft-status/>

Reporting

Monthly IETF SLA reports:

<http://www.iana.org/about/performance/ietf-statistics/>

IETF Plenary reports:

http://iaoc.ietf.org/plenary_reports.html

IANA Activity reports at the IETF:

<http://www.ietf.org/meeting/proceedings.html>

(included in the IETF chair plenary report)

Any Questions ?

- If you have have any questions regarding this presentation, please send email to the following:
iana@iana.org